



KAINDL

BOARDS.

FLOORS.

IDEAS.

Sometimes they are crazy. Then ingeniously simple. They fill whole books or fit on a napkin. Sometimes they appear suddenly, like a bolt of lightning out of the blue. But usually they grow gradually and need to mature in order to come to fruition in the end. Just like a tree that started growing its roots hundreds of years ago.

IDEAS.

Ideas are the key tool which Kaindl uses to produce boards and floors. A new take on wood. Or, in other words: BOARDS. FLOORS. IDEAS.



1897	<p>Foundation of Lungötz factory</p> <p>Established as a small sawmill in 1897, the company soon developed to become a recognised specialist wood company.</p>	<p>1959</p> <p>Foundation of Salzburg factory</p> <p>A new era begins in Salzburg in 1959. Kaindl is one of the first manufacturers to produce the first ever chipboard here in 1962.</p>	<p>1982</p> <p>Restructuring</p> <p>In 1982, the Lungötz factory is completely restructured. A new facility for endless laminate and worktops is created.</p>	<p>1989</p> <p>The big blaze</p> <p>In 1989 a catastrophic fire almost completely destroys the production facilities in Salzburg. With an investment of a total of 150 million euros, the plant is rebuilt and modernised.</p>

IDEAS since 1897

Thomas Alva Edison invents the film projector. Rudolf Diesel presents his engine. Felix Hoffmann develops aspirin. And Kaindl's hour of birth, too, is close at hand. 1897 was a good year for new ideas.

For over a hundred years, Kaindl has been writing a success story with many protagonists: new products, new plants, new markets. Not even two world wars and a major fire could prevent its growth. You'll be surprised at the new chapters the future has in store.



<p>Laminate flooring</p> <p>Laminate flooring production begins in 1989. Within ten years, Kaindl becomes a global market leader.</p>	<p>1989</p>
<p>MDF plant</p> <p>In 1999, after a total investment sum of 88 million euros, the MDF plant in Salzburg is constructed taking only 6 months to build.</p>	<p>1999</p>
<p>Kaindl Megastore</p> <p>Since 2000, the Kaindl Megastore, which is directly adjacent to the Salzburg factory, has ensured smooth distribution of the entire in-stock product range. Storage area: 40, 000 square metres.</p>	<p>2000</p>
<p>CTS Terminal</p> <p>Construction and expansion of the container terminal in 2000 and 2007. Approx. 180,000 containers and approx. 240,000 TEUs are loaded here each year.</p>	<p>2000</p>
<p>Kaindl Floor House</p> <p>Store, Showroom, Competence Center: Since its opening in 2007, the Kaindl Floor House has offered brand new dimensions in terms of customer communication.</p>	<p>2007</p>
<p>Kaindl Floor Factory</p> <p>High-tech mill and think tank: Since 2008, the Kaindl Floor Factory has been designing and producing Kaindl wooden flooring and in part also laminate flooring.</p>	<p>2008</p>



Can ideas be produced alongside boards and flooring?

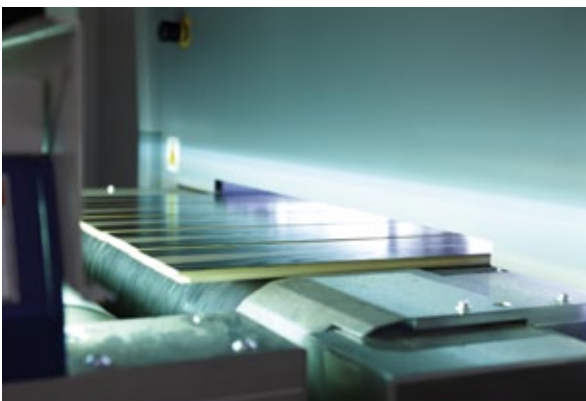
Can a factory also be a think tank?

The answer lies behind the portholes of the Kaindl Floor Factory:

Yes!

IDEAS

made in Salzburg



But not just there. Kaindl has always placed a strong emphasis on production facilities and logistics systems using state-of-the-art technology that continue to set new standards. The truth is that innovative ideas require innovative technology. From the first chipboard in the early sixties, to the digitally coloured floorboards that have been catapulting flooring into the future since 2008.





Naturally good
IDEAS

Ecology and environmental protection are on everyone's lips. We believe: actions speak louder than words. Kaindl processes almost 90 percent waste wood from the sawmill industry and log wood from the regular thinning of native forests. We only use wood products from PEFC-certified forests for all substrates. Exclusively and without exception.

But that is just the beginning. For Kaindl boards and flooring, modern ecological design begins in the forest and doesn't end in the living room. It starts from the very beginning again many years later with the recycling of the products.

1985 changeover of board production to E1 quality standard
1990 installation of the latest electrical filters
1996 environmental protection prize awarded by the province of Salzburg
1999 MDF system; integrated organic scrubber recycles the wastewater
2000 Industrial waste heat to be provided to households as district heat
2003 Start of the cargo shuttle service between Salzburg and Lungötz
2003 Production of the first Super E0 chipboard
2006 Broad conversion to biomass instead of fossil fuels
2007 Expansion of the container terminal
2007 Eco-design becomes an integral part of corporate philosophy

BOARDS

They can be found in the rural cottage and in the penthouse. In the canteen kitchen as well as the hobby room. And even as the custodian of cultural treasures in the Austrian National Library. Kaindl boards are at home wherever design and functionality are to be found under the one roof.

Wood veneers

Nature meets design: Wood veneered boards in all available wood types have been an inherent part of the Kaindl BOARDS collection for many years. The highlights of the range include Kaindl finoboard, the first wood veneered board with a melamine coated finished surface and matching veneer edges.

Dekor spectrum

Optics meet haptics: A broad range of designs and authentic surface structures are the hallmarks of Kaindl dekor boards and laminates as well as worktops and window sills. Due to their complete range of accessories, the boards can be used in virtually all areas of modern interior design.





FLOORS

They can be found in the living room and the showroom. Or are coloured for the cocktail bar or nursery in the appropriate style. And the know-how and imagination of the leading innovator are ingrained in each floorboard. Kaindl floors form the solid basis of modern interior design. In the true sense of the word.

Wood flooring

Tangibly natural: Kaindl wooden flooring is not only more resistant than parquet flooring, but also conserves resources. Around 4,000 square metres of flooring can be made from a single tree trunk – that is the equivalent of up to 40 times more area as compared to solid parquet flooring. And: a patented manufacturing process allows for the wooden boards to be styled with any pattern and motif.

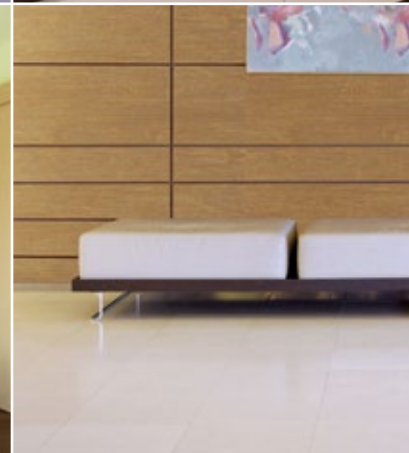
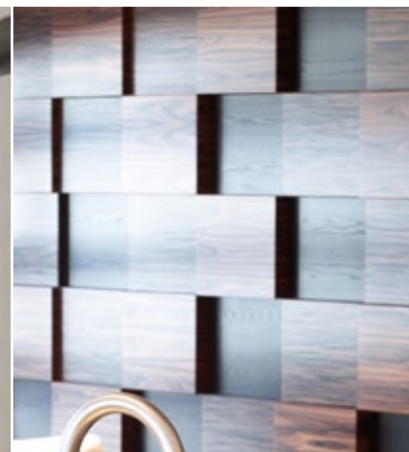
Laminate flooring

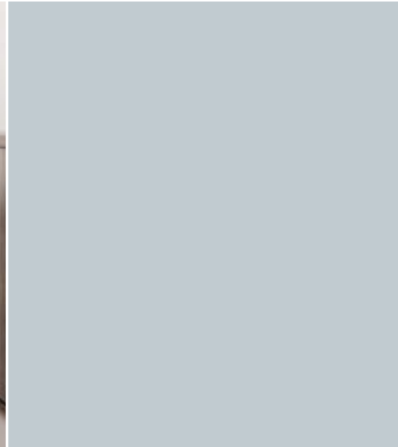
Tangibly authentic: décors with a natural appearance and innovative surface structures are the hallmarks of Kaindl laminate flooring. In the case of soft touch tiles and boards, the substrates are directly styled and stand out partly due to their surface finish which is warm to the feet.



Interior design ideas

Some boards can take a beating. Others provide glitz and glamour. They come in many colours and an even greater number of decors. Or wood-veneered and ready coated. And all of them feel just as authentic as they look: Kaindl boards.

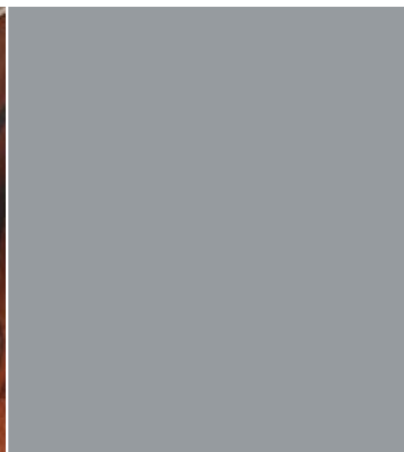






Flooring ideas

They are robust and durable. Their natural charm and authentic characteristics are highly appreciated. Some have a pure and simple appearance, others dare to be colourful and reflect a particular lifestyle. And, in its own way, each is a sort of horizontal designer piece: Kaindl floors.





Non-stop innovations: Not only does Kaindl produce boards and floors, it also produces ideas. As early as the 1960's, the company had already made a name for itself around the world as the first chipboard manufacturer.

Today Kaindl is considered a leading innovator in the areas of flooring and interior design. How wonderful when ideas from Salzburg conquer the world: 94 percent of the products are destined for export.

IDEAS
for

Wood Veneered Boards

High-grade veneered boards of both select exotic and all major wood types

Finoboard

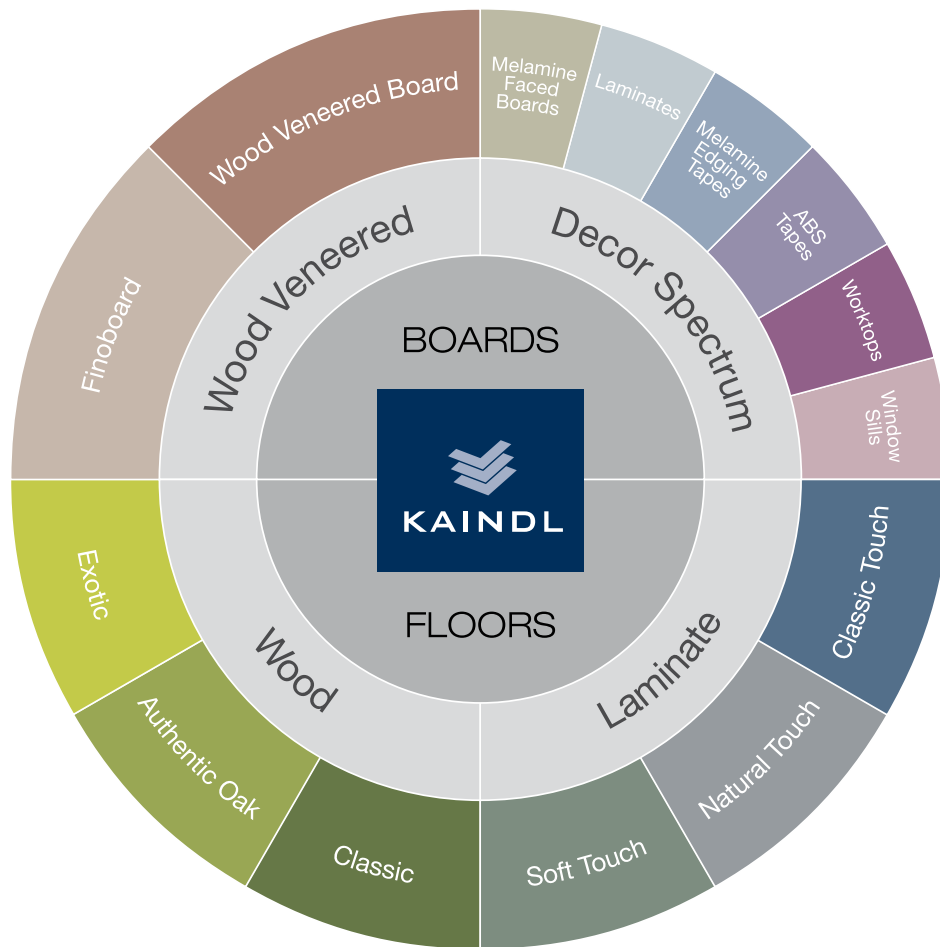
Wood Veneered Boards with a melamine coated finished surface and matching veneer edges

Decor Spectrum

Uni, wooden, synchronised and glossy decor boards as well as laminates with authentic surface structures; in each case melamine and ABS edges of the same decor

Worktops/Window Sills

Postforming products with various decor images and surface structures



you

Classic

Wooden flooring with high-grade veneered boards of all major wood types

Authentic Oak

Wooden flooring with directly styled oak veneers in various designs

Exotic

Exotic wooden images styled directly to suitable wooden veneers

Classic Touch

Classic laminate flooring with authentic decors and surface structures

Natural Touch

Classic laminate flooring with synchronised structure (surface structure corresponds to the decor image)

Soft Touch

Directly styled with matt or high-gloss surface finish



Awards

- ★ Province of Salzburg Innovation Prize, 2008
- ★ iF product design award, 2009
- ★ Heimwerker Praxis "Product of the Year", 2010



Certificates

- ★ PEFC certification
- ★ Greenguard and Greenguard Children & Schools
- ★ Der Blaue Engel ("Blue Angel")



Facts & Figures

Sales 2009/10:

EUR 421.3 million | Employees: 775 | Export share: 94%

Sales channels:

approx. 35% furniture industry | approx. 30% board and specialty traders |

approx. 35% DIY (Do it yourself)



the world

Locations

Wals/Salzburg | Lungötz

Core markets

EU | Eastern Europe | North and South America | Taiwan | Japan



M. Kaindl Holzindustrie | Kaindl Flooring

Kaindlstraße 2 | 5071 Wals/Salzburg, Austria | T: +43(0)662/85 88-0 | F: +43(0)662/85 1331 | sales@kaindl.com | www.kaindl.com